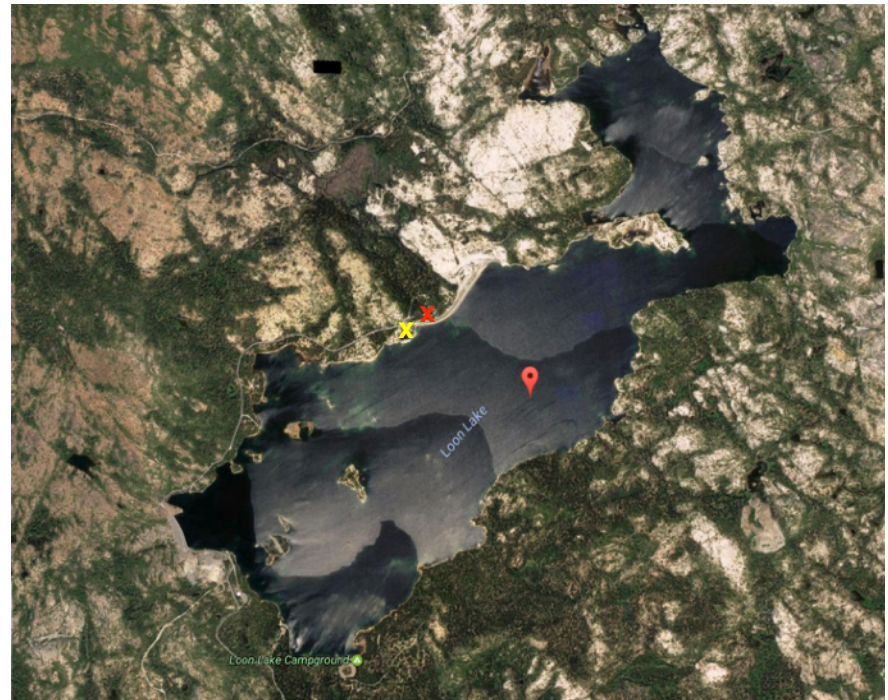
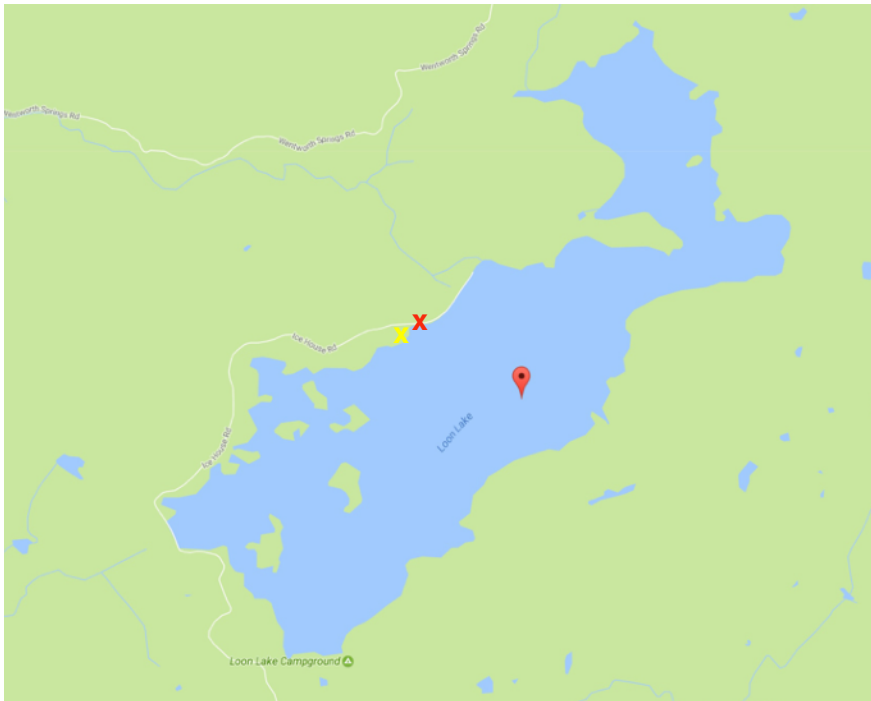


Galaxy Shooting Locations at Loon Lake

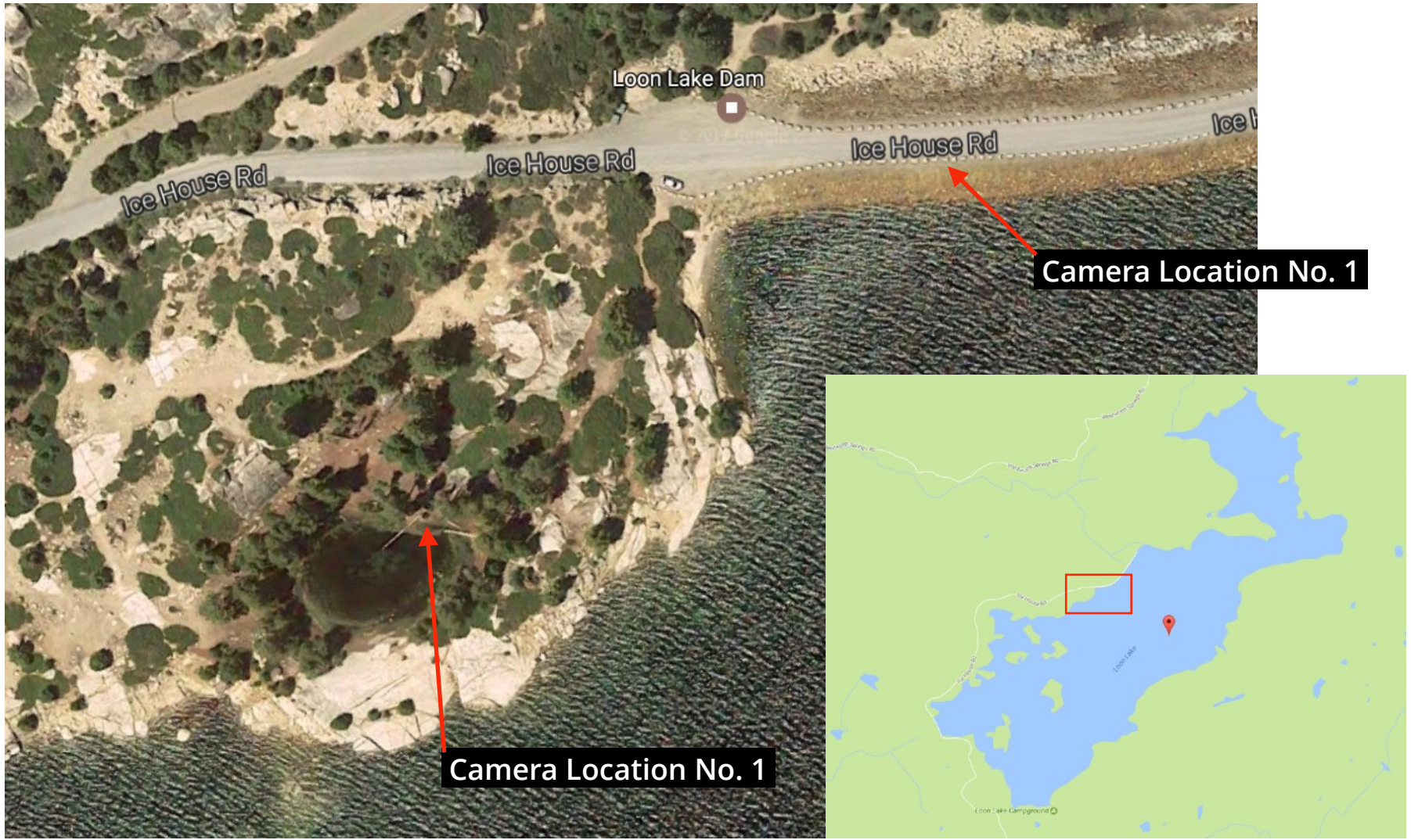
Nights of July 24, 25, 26 and August 21, 22, 23

There are two previewed locations for Camera Positions for shooting the Galaxy at Loon Lake. Both are located on the North Shore of the Lake. This is because the Galaxy will be visible in the Southern Sky and the North shore provides the opportunity to have the Lake waters in the foreground of the photos and the fundamental reason for going to Loon Lake. Otherwise any foreground subject (building, tree, rock or geological feature will work). The Galaxy will still be in the Southern Sky, so regardless of where you location is situated, your camera will be facing South to capture the Milky Way and the Galactic Core. The general location for the Galactic Core on the above stipulated nights will be in the Southern Hemisphere at a compass bearing of between 170° and 230° in July and between 190° and 230° in August.

At Loon Lake the first and safest location, No. 1 Red X (in terms of access and being able to come away with a photo), is situated on the Dam Road on the North Shore of the Lake. The second location, No. 2 - Yellow X (and perhaps the more photographic location), is from a small pond that is located on the North Shore of the Lake within a short walk of the Dam Road. This location is also a camp site which may be occupied in which case you might not be able to access it without getting the permission of the campsite occupiers.



Camera Location Details



View and Image from Camera Location No. 1



The above photo was taken on a scouting trip approximately 2-weeks prior to the actual trip to photograph the Galaxy. It was determined that it would be a "Save Cover Shot" because it was taken from the Dam Roadway and would be accessible all night (no campers). Notice the red shapes behind the larger trees. They are on the trail that leads to Camera Location No. 2 which is situated on the North side of the small Pond described on the next page.



View and Image from Camera Location No. 2



The above scouting photo was made in the afternoon on the day of the Galaxy Photo Shoot. Our group accidentally stumbled on this location after seeing some campers packing up to go home. We followed the trail about 50-yards off the road and found this small pond. The photo to the top right was taken with an iPhone using the Spyglass App to validate the site's suitability to make an image of the Galaxy. The compass overlaid is pointing directly South 180°. We knew the Galactic Core would appear at approximately 165° and slant downward to the right giving us confidence the location would provide an opportunity to get the shot with a nice foreground. This location should be viable for the Nights of July 24, 25, and 26. You will likely have to shift the Camera position to the left on the nights of August 21, 22, and 23 as the Galactic Core will first be visible starting at around 190°

