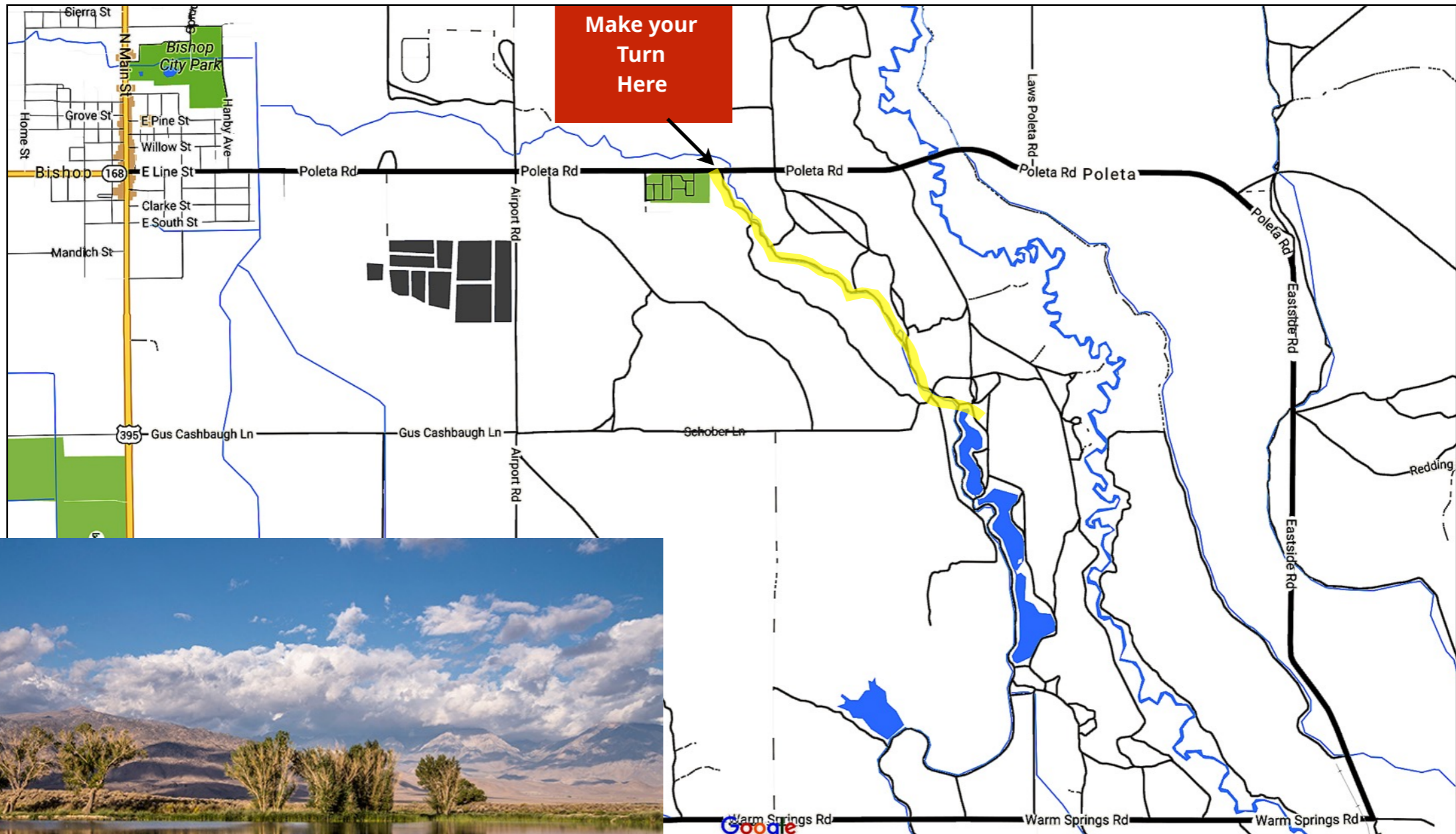


# Bishop Ponds



Access to the Ponds is off Poleta Rd. Turn right immediately after the cemetery, situated on right, onto a dirt road. Road is okay for any passenger vehicle. Once on the dirt road bear LEFT at the first Fork in the road and follow it to Ponds.

GPS Location on Google Maps is: 37.348420 -118.335800